

Emily Simek, *Untitled (Pink Ecology)*. Digital Render, 2020

## E-RESIDENCY

### *Interbeing*

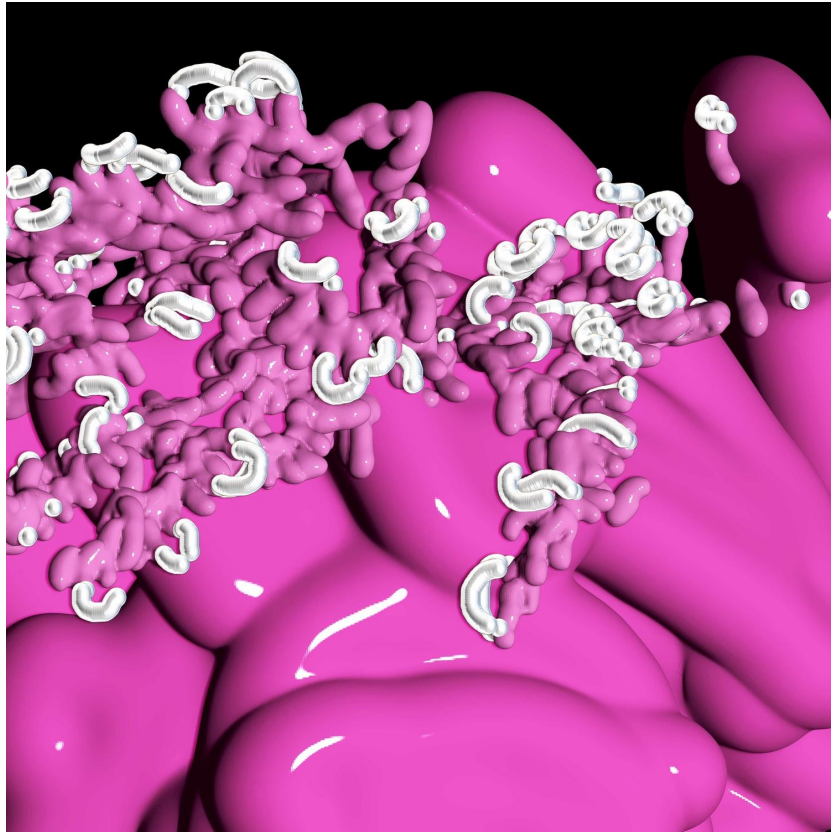
### Emily Simek

*A rhizome has no beginning or end; it is always in the middle, between things, interbeing'* (Deleuze & Guattari (1976))

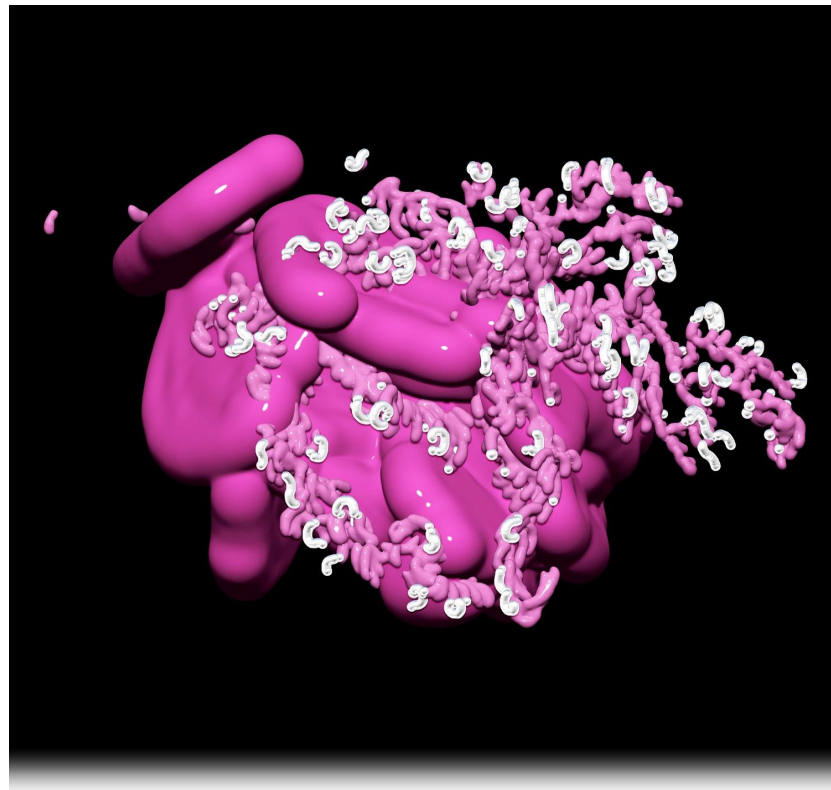
*Interbeing* is a 3D digital organism that will grow via daily acts of sculpting during a one month residency. Created using the 3D modelling program ZBrush, the digital organism will begin as a nuclei and expand via daily additions to form a complex rhizome. As it grows, it's slippery limbs branch outwards to form clusters like microorganisms in the early stages of evolutionary development.

*Interbeing* frames my process of art-making as the development of a symbiotic relationship between the self and digital organism. My acts of sculpting and editing via the program ZBrush become substitute for the provision of sustenance and grooming which enable the entity to thrive. In turn, the organism functions online with myself as a beneficiary. This relationship is a framework used to re-evaluate the power relations between user and technology. Contextualised within the COVID-19 pandemic and an increased dependence on digital platforms, *Interbeing* subverts these dynamics to question what the digital matter needs from the artist to survive.

Link to residency and extended documentation: <https://emilysimek.com/Interbeing>



Emily Simek, *Interbeing: propagation [Day 9]*, (detail). Digital Render, 2020



Emily Simek, *Interbeing: propagation [Day 9]*. Digital Render, 2020